

E-NEWS

GROWLAB Teleview

Monitor your crop's growing process 24 hours a day, 7 days a week

To enable you to monitor your crop's growth and development day and night, Hoogendoorn Automation can now offer you an industrial camera. Just place the GROWLAB Teleview in your crop, and you can look back on and analyse any deviations that occur.



The camera allows you to continually record the state of your crop and spot any deviations from the normal crop development in good time. Images can be sent digitally to a remote adviser or to a fellow grower. This permits immediate consultation on the observations and on any crop action that may be necessary. Growers can process the images via their HOOGENDOORN ECONOMIC or via a GROWLAB Plant Monitoring System.

The software supplied with the camera is easy to use. You can also combine the images with climate data and GROWLAB plant measurements from the same period.

Conditioned growing

Conditioned growing is playing an ever-increasing role in Dutch horticulture. With this type of growing, the vents remain closed as much as possible, which avoids unnecessary loss of CO₂ and heat. A number of studies have shown that the productivity increases considerably with this approach to the greenhouse climate. Hoogendoorn has been participating in the development of this form of growing for some years already.



In our latest ECONOMIC update, we have paid a lot of attention to conditioned growing once again. In this software, plant measurements are combined with the cooling and heating program, aiming for the plants to grow under optimum growing conditions.

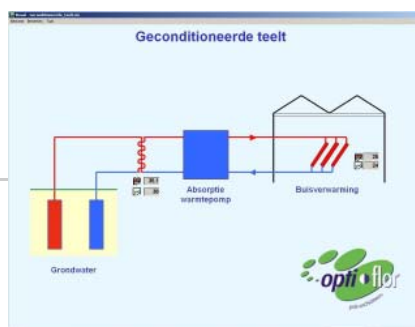
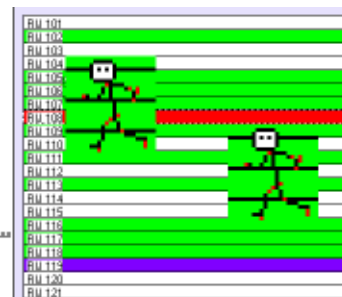
New functionalities of the NOMAD registration program

NOMAD is Hoogendoorn Automation's wireless recording system. It employs wireless entry terminals (NOMAD Keys). We have now developed a new key, complete with a barcode scanner.

The new software allows you to see from your greenhouse map where exactly your employees are working at the time, and what they are busy with. You can also retrieve the actual greenhouse temperature, RH and outside conditions from the ECONOMIC via the NOMAD Key.

You can therefore compare your impression of the greenhouse climate directly with the actual situation, without the need to consult your ECONOMIC for this.

RM: 118
003 Ad Jacobs
1-11-2005 14:21
00:24 100%
009 Pab Smits
1-11-2005 14:25
00:18 100%
Delen
KAS: Afdeling 5
Opp: 4880 m2
Klas:
Opp: 18544 m2
Diam: 67.20
Productiviteit: 302 m2/ha



E - NEWS

ECONOMIC process computer update, version 2006

ECONOMIC version 2006 fully integrates GROWLAB plant sensor software, as well as our "Plantivity", introduced last year. This gives you the option to control your greenhouse climate directly via the measured data.



Screen control has also been considerably improved in the new version. As they are now actuated via the Ridder LogicLink®, the shading level can be controlled even more accurately. With our revised crop condensation module, it is now possible to determine the condensation risk for all crops. As a result, a lower pipe temperature can be set, saving energy. One completely new feature of the ECONOMIC is our tank management module. This enables you to increase the water control in the closed crop.

HOOGENDOORN DATAPOINT

Hoogendoorn has developed a new I/O unit, the HOOGENDOORN DATAPOINT. This I/O unit is responsible for the direct actuation of all processes in the greenhouse. The unit is actuated by the ECONOMIC. The new HOOGENDOORN DATAPOINT offers many benefits to the user.

DATAPOINT is of industrial quality and of modular design. As a result, you can easily extend this product, and it requires much less service time than any other systems currently available on the market. Control quality has been improved and is more accurate now. Because of its smaller size, the unit takes up less space in the greenhouse, too. The HOOGENDOORN DATAPOINT can also be used to actuate Ridder LogicLink®.



GROWLAB WET sensor and GROWLAB Aqua sensor

GROWLAB is marketing two new interfaces: for the WET sensor and the Aqua sensor. Both interfaces are fitted with an LCD display to show the actual moisture content. In addition to the option of measuring in Perlite Substrate, this sensor is also suitable for clay granules and potting compost. Connectivity options have been further extended, so that both the WET sensor and the Aqua sensor can now be connected directly to any climate computer.



HOOGENDOORN ENVIRO

The ENVIRO is a small, easy-to-operate climate computer. A scroll-down menu provides for flexible setting of the ENVIRO and can be used to control ventilation, hot air heating, air circulation, screens, CO₂, light, boilers and water. This computer is intended specifically for smaller greenhouses, plastic greenhouses and garden centres. Software is presently available in English and will be translated into other languages in the first quarter of 2006.

